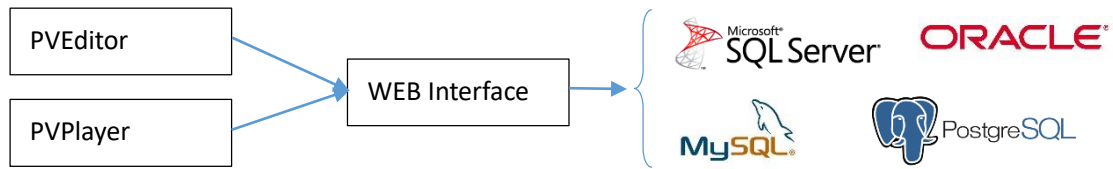


Database display function of PVSystem

PVSystem use a special way to display the database contents. It's not reading from the database directly, but through a WEB based interface.



The WEB interface feedback database structure and contents in XML format. So you may write your own interface to read your database.

1. query_list.php

This interface is used by the PVEditor to get a list of all available queries (AKA tables)

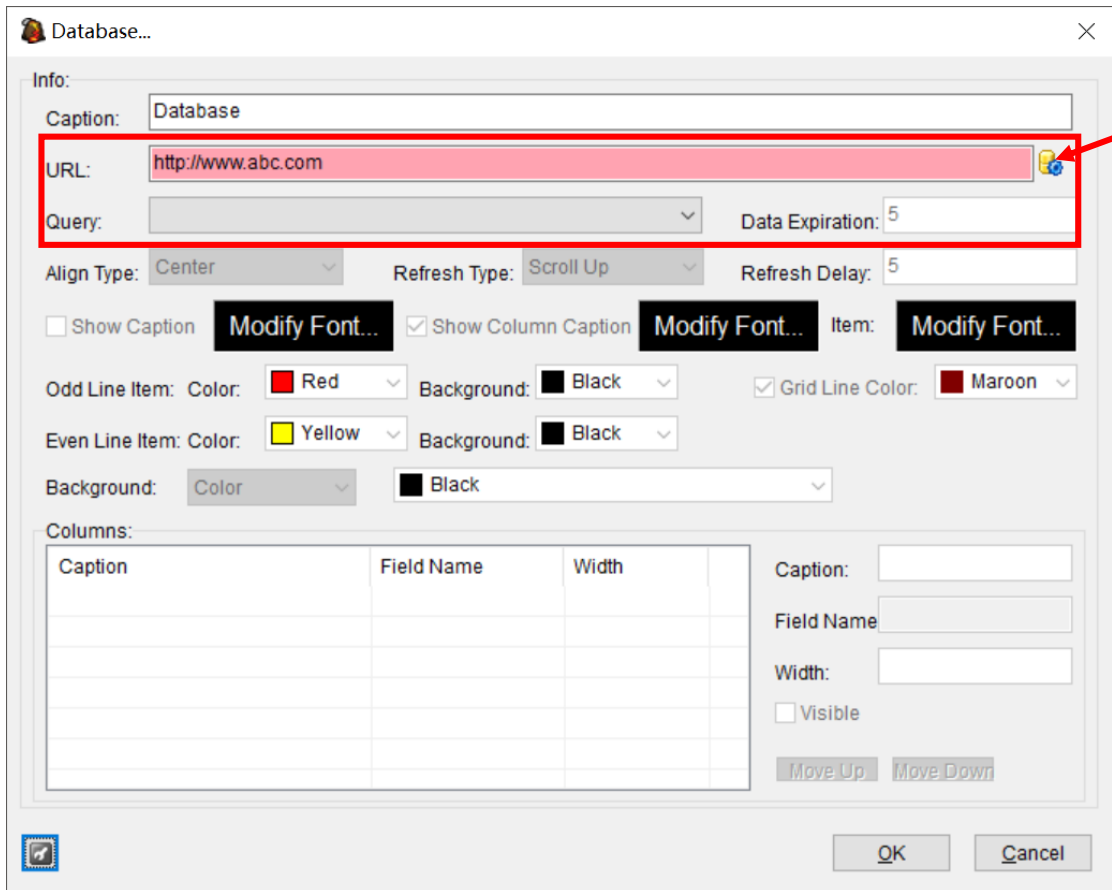
http://www.abc.com/query_list.php

Return contents:

```
<contents>
  <tables table0="QueryA" table1="QueryB"/>
</contents>
```

"QueryA" and "QueryB" in above sample is the name of the query for the PVEditor to list out.

When you press the "connect" button on the PVEditor in the "Database" dialog, it will access this interface to lists all the available queries.



2. request.php

This interface is used by the PVEditor to display the fields of a specified query, and by the PVPlayer to display the contents as well.

<http://www.abc.com/request.php?query=QueryA>

Return contents:

```
<contents>
  <field field0="field_name_1" field1="field_name_2"/>
  <data field_name_1="Some data" field_name_2="Other data"/>
  <data field_name_1="Data" field_name_2="Data"/>
  <data .../>
</contents>
```

The "field" node is for the PVEditor and PVPlayer to realize the name of each field of the contents.

The "data" nodes are for the PVEditor and PVPlayer to realize the contents of the specified query. Each "data" node is a line of data.